

Study of topological structures in bidimensional magnetic systems

Tony Milla Robles ¹ J. Gomez Q 1 A. Terrazas Palomino¹
J. Rojas Tapia ¹, C. Rojas Ayala ¹

¹Grupo de métodos computacionales aplicados a nanomateriales GMCAN -
Universidad Nacional Mayor de San Marcos UNMSM

September 26, 2020

Model and System

$$H_J = -J \sum_{\langle ij \rangle} \vec{S}_i \cdot \vec{S}_j \quad (1)$$

$$H_D = \sum_{\langle ij \rangle} \vec{D}_{\langle ij \rangle} \cdot \vec{S}_i \times \vec{S}_j \quad (2)$$

$$H_{\text{magneticfield}} = -\vec{h} \cdot \sum_i \vec{S}_i \quad (3)$$

$$H = H_J + H_D + H_{\text{magneticfield}} \quad (4)$$

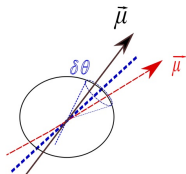


Figure: Classical Heisenberg spin Model

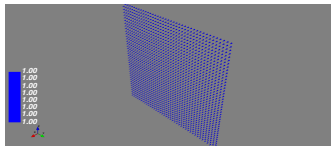


Figure: System

Method

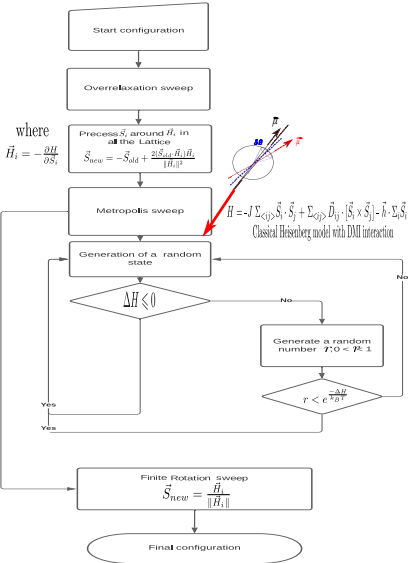


Figure: Hybrid Monte Carlo Method

Results

Emergence of Skyrmion Lattice

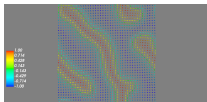


Figure: $D=0.6$,
 $H=0.1$

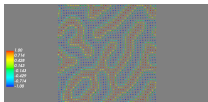


Figure: $D=1$,
 $H=0.1$

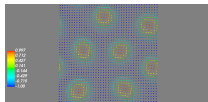


Figure: $D=0.6$,
 $H=0.2$

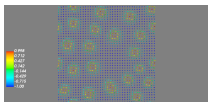


Figure: $D=1$,
 $H=0.6$

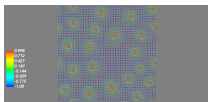


Figure: $D=1$,
 $H=0.6$

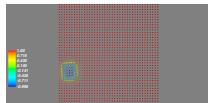


Figure:
 $D=1, H_{in}=0.5$

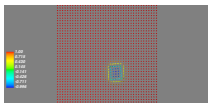


Figure:
 $D=1, H_{in}=0.5$

Thank you!!